

DBD-25X
 7/8" (#7) Electric Rebar Bender
Parts Guide



DBD-25X Electric / Mechanical Rebar Bender

This heavy-duty portable bender effortlessly bends up to #7 (7/8") Grade 60 rebar. This powerful electrical-mechanical bender a preset angle lock feature for repeating the same angle bend. The angle selector can be set to accurately bend any angle from 0-180 degrees.

Optional
Rebar Bender
Stand Available
BCS-25X
 Bender Stand for DBD-25X
 Rebar Bending Machine



Specifications

Maximum Bending Diameter	7/8" (#7) Rebar (22mm) Grade 60
Bending Angle / Speed	Up to 180 degrees / 6 seconds
Voltage/Amperage	115V 50/60Hz / 12 amps
Tool Weight	190 lbs (86 kg)
Dimensions L x W x H	19" (490mm) x 21.5" (550mm) x 17.2" (440mm)

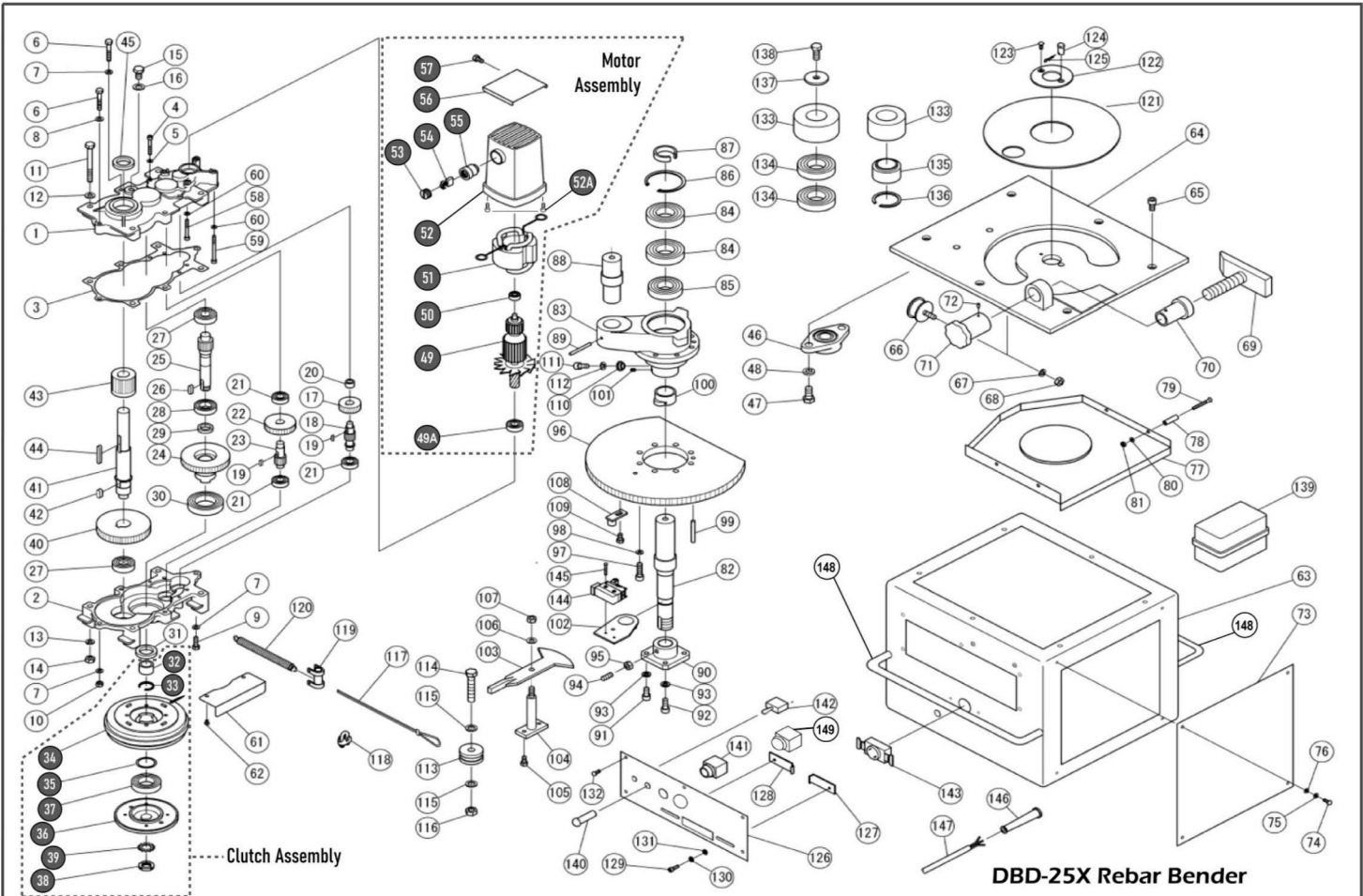


BN Products-USA™

A DIVISION OF BENNER-NAWMAN, INC.

WWW.BNPRODUCTS.COM

Electric Rebar Bender DBD-25X



Part Number Listings

No.	Part No.	Part Name	Qty
1	1BR5001	GEAR CASE M	1
2	1BR5002	GEAR CASE C	1
3	1BR5206	GEAR CASE PACKING	1
4	7CB06045	CAP BOLT M6X45	2
5	7SW006	SPRING WASHER M6	2
6	7B08050	BOLT M8X50	3
7	7SW008	SPRING WASHER M8	4
8	7PW008	PLATE WASHER M8	1
9	7B08025	BOLT M8X25	1
10	7N008	NUT M8	1
11	7B10100	BOLT M10X100	4
12	7PW010	PLATE WASHER M10	4
13	7SW010	SPRING WASHER M10	4
14	7N0010	NUT M10	4
15	7B12020	BOLT M12X20	1

No.	Part No.	Part Name	Qty
16	7WF12	SEAL WASHER WF12	1
17	1BR5023	HELICAL GEAR	1
18	1BR5025	PINION NO.1	1
19	1BR5024	HELICAL GEAR KEY	2
20	1BR5009	NEEDLE BEARING TA1212	1
21	1BR5003	BEARING 6202V, 6202ZZ	4
22	1BR5026	GEAR NO.1	1
23	1BR5027	PINION NO.2	1
24	1BR5028	GEAR NO.2	1
25	1BR5029	PINION NO.3	1
26	1BR5030	PINION KEY 7X7X20	1
27	1BR5004	BALL BEARING 6204	2
28	1BR5006	BALL BEARING 6005	1
29	1BR5015	OIL SEAL SC22-32-7	1
30	1BR5008	BALL BEARING 6009Z	1



Part Number Listings (continued)

No.	Part No.	Part Name	Qty
31	1BR5016	OIL SEAL SC45-62-9	1
Complete Clutch Assembly: Part Number 102004			
32	1BR5010	NEEDLE BEARING TA223020	1
33	1BR5011	CIRCLIP AR-30	1
34	1BR5038	7TMF1342 CLUTCH ASS'Y	1
35	1BR5043	SHIM	1
36	1BR5038D	CLUTCH ARMATURE FLANGE	1
37	1BR5007	BEARING 6007ZZ	1
38	1BR5031	BEARING NUT	1
39	1BR5032	BEARING WASHER	1
40	1BR5033	GEAR NO.3	1
41	1BR5035	SHAFT	1
42	1BR5034	GEAR NO.3 KEY	1
43	1BR5036	PINION NO.4	1
44	1BR5037	PINION KEY	1
45	1BR5017	OIL SEAL SC30-45-8	1
46	1BR5047	FLANGE UNIT UCFL205	1
47	7B14028	BOLT M14X28	2
48	7SW014	SPRING WASHER M14	2
Motor Assembly: Part Number 1BR5012			
49	1BR5012C	ARMATURE	1
49A	1BR5003	BEARING 6202V	1
50	1BR6200ZZ	BALL BEARING 6200ZZ	1
51	1BR5012B	STATOR COIL	1
52	7HTK986750B	MOTOR HOUSING	1
52A	7P205055	MOTOR HOUSING SCREWS	2
53	7HTK940540B	BRUSH CAP	2
54	7HTK999038B	CARBON BRUSH SET	1
55	7HTK986691B	CARBON BRUSH HOLDER	2
56	1BR5048	MOTOR COVER	1
57	7B08015	BOLT M8X15 WITH WASHER	1
58	7CB06050	CAP BOLT M6X50	2
59	7CB06070	CAP BOLT M6X70	2
60	7SW006	SPRING WASHER M6	4
61	1BR5044	CLUTCH COVER	2
62	7PB06008	PAN HEAD BOLT M6X8 W/ WASHER	4
63	1BR50501A	FRAME	1
64	1BR50511	BASE	1
65	7CB10020	CAP BOLT M10X20	6
66	1BR5133	DAMPER	1

No.	Part No.	Part Name	Qty
67	7SW010	SPRING WASHER M10	1
68	7N010	NUT M10	1
69	1BR5063	ADJUSTABLE STOPPER	1
70	1BR5064	ADJUSTABLE NUT	1
71	1BR5065	ADJUSTABLE HANDLE	1
72	1BR5066	SPRING PIN Φ5X8	2
73	1BR5055	SIDE COVER	2
74	7PB06008	PAN HEAD BOLT M6X8	8
75	7SW006	SPRING WASHER M6	8
76	7PW006	PLATE WASHER M6	8
77	1BR7120	DUST COVER	1
78	1BR7121	DUST COVER STAY	4
79	7SB06050	FLAT HEAD BOLT M6X50	4
80	7SW006	SPRING WASHER M6	4
81	7N006	NUT M6	4
82	1BR5068	MAIN SHAFT	1
83	1BR5069	SWIVEL ARM	1
84	1BR5070	BALL BEARING 6208Z	2
85	1BR5071	BALL BEARING 6207Z	1
86	1BR5072	SNAP RING C-80	1
87	1BR5073	SPACER	1
88	1BR50741	ROLLER SHAFT	1
89	1BR5075	SPRING PIN Φ8X60	1
90	1BR50791	MAIN SHAFT CLAMP	1
91	7CB10020	CAP BOLT M10X20	2
92	7CB10025	CAP BOLT M10X25	2
93	7SW010	SPRING WASHER M10	4
94	7SS10025	SET SCREW M10X25	1
95	7N010	NUT M10	1
96	1BR5084	SWIVEL GEAR	1
97	7CB10035	CAP BOLT M10X35	8
98	7SW010	SPRING WASHER M10	8
99	7SP08030	SPRING PIN Φ8x30	1
100	1BR5087	LIMIT SWITCH CAM	1
101	7SS06010	SET SCREW M6X10	1
102	1BR51324	ANGLE SET PINION	1
103	1BR52261	ANGLE SETTER	1
104	1BR50941	ANGLE STAND	1
105	7B308015	BOLT M8X15 WITH WASHERS	2
106	1BR5098	DISK SPRING M10	2



Part Number Listings (continued)

No.	Part No.	Part Name	Qty
107	1BR5099	LOCK NUT SET	1
108	1BR5101	SWITCH CAM	1
109	7B308015	BOLT M8X15 WITH WASHERS	1
110	1BR5107	WIRE CLAMP	1
111	7CB10020	CAP BOLT M10X20	1
112	7SW010	SPRING WASHER M10	1
113	1BR51101	JIB	1
114	7B14060	BOLT M14X60	1
115	7PW014	PLATE WASHER M14	2
116	7UN014	SELF LOCK NUT M14	1
117	1BR5116	WIRE ROPE	1
118	1BR5117	WIRE CLIP WITH NUT	1
119	1BR5118	SPRING HANGER	1
120	1BR5119	RETURN SPRING	4
121	1BR5135	CENTER COVER	1
122	1BR5134	CENTER PLATE	1
123	7SB06015	FLAT HEAD BOLT M6X15	1
124	1BR507811	ROLLER STOPPER	1
125	1BRSS10	SNAP PIN	1
126	1BR5050	SWITCH PANEL	1
127	1BR7070	ANGLE STOPPER (R)	1
128	1BR7071	ANGLE STOPPER (L)	1
129	7CB06018	CAP BOLT M6X18	2
130	7BW010	DISK SPRING M10	2
131	7PW006	PLATE WASHER M6	2
132	7PB306015	PAN HEAD BOLT W/WASHERS	5
133	1BR5140	ROLLER NO.1 Φ50MM	1
133	1BR5142	ROLLER NO.2 Φ70MM	1
133	1BR5143	ROLLER NO.3 Φ79MM	1
133	1BR51441	ROLLER NO.4 Φ96MM	1
133	1BR51451	ROLLER NO.5 Φ120MM	1
133	1BR5146	ROLLER NO.6 Φ156MM	1
134	76208Z	BALL BEARING 6208Z	6
135	7HSL08	BEARING FOR ROLLER NO.3	1
136	7BR60	SNAP RING BR60 FOR NO.3	1
137	1BR5076	ROLLER CLAMP	2
138	1BR5080	CLAMP BOLT	2
139	1BR512911B	CONTROL BOX ASSEMBLY	1
Control Box Assembly Parts - See Figure 1			
A	1BR5129H	115V Transformer	1
B	1BR5406	Magnetic Contactor FC01/G	1
C	7Z21D101	Varistor Z21D101 (115/230V)	1

No.	Part No.	Part Name	Qty
D	1BR51295	Diode S5VB60-5000	1
E	1BR51296	Diode U5G	1
F	1BR51297	Condenser	1
G	1BR5129F	Fuse Holder	1
H	1BR5129G	Fuse	1
I	1BR5407	Relay	2
J	1BR5408	Socket P2RF-05	2
140	1BR5126	PILOT LAMP	1
141	1BR5127	OPERATION SWITCH	1
142	3CD0151	MAIN SWITCH	1
143	1BR5128	SOCKET FOR FOOT SWITCH	1
144	1BR5124	LIMIT SWITCH AZ7141	2
145	7PB204030	PAN HEAD BOLT W/WASHER	4
146	1BR5012G	CORD ARMOR	1
147	1BR5012F	CORD SET	1
148	1BR3100400	HANDLE	2
149	1BR5231	EMERGENCY STOP BUTTON	1

Figure 1
1BR512911B
Control Box Assembly

